

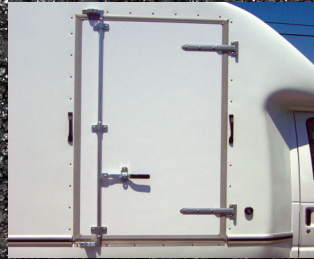
AEROCELL VAN BODY



OPTIONS



Sliding cab-access door



Side door



Hardwood floor



Plywood lining with D-rings



Full-width rear swing-out doors



Walkramps

Bulkheads

- Solid wall, no cab access
- Full height dividing walls

Bumpers

- ICC step bumper
- Drop-down second step
- Aluminum

Cargo Control

- Tie-down rings
- Series "E" & "F" track
- Ratchet straps
- Tie bar/slats

Cargo Handling

- Rail and Tuckaway liftgates
- Ramps

Doors

- Double panel swing-out
- Side doors
- Access doors
- Aluminum-clad roll-up doors
- Stainless steel hardware

Floors

- Hardwood
- Plastic
- Steel or Aluminum diamond plate

Heat/Cool

- Hot water heater
- Roof-mounted A/C
- Vents

Insulation

- 1" - 2" Styrofoam walls/ceiling/air deflector

Ladder Racks

- Roof mounted
- Cat walk
- Removable rear access ladder

Lights

- Additional 12V dome
- 3-way switch
- Custom translucent skylights
- Fluorescent
- Spotlights
- Emergency
- LED

Linings

- Full plywood, 3/8", 1/2", 3/4"
- Fiberglass
- Scuff plates

Safety

- Back-up alarms
- Rear view cameras
- Reflector kits

Shelving

- Vanteriors®
- Custom

Towing

- Receiver hitches
- Electric brake controller
- Trailer plug receptacle

Toolboxes

- Under body mounted

Windows

- Fixed and sliding

DIMENSIONS

Body Lengths		Inside Height		Width		Wheelbase	
Outside	Inside	79" Flat Floor	85" Wheelboxes	96" Outside	91" Inside	E350/E450	
						158"	176"
12'	11'1"	X	X	X	X	X	
14'	13'1"	X	X	X	X	X	
15'	14'1"	X	X	X	X	X	X
16'	15'1"	X	X	X	X		X
17'	16'1"	X	X	X	X		X

AEROCELL —
The premium truck body
that will cost you less.



GREAT GRAPHICS DISPLAY!

Due to continuous product improvements, specifications may change without notice. Chassis available through Umicell pool stock. Contact your local Ford dealer for pricing.



DEL BACKS YOU UP ACROSS CANADA

PORT COQUITLAM, B.C.
604-941-6241

EDMONTON, ALBERTA
780-453-7979

CALGARY, ALBERTA
403-236-9735

REGINA, SASKATCHEWAN
306-359-1477

BURLINGTON, ONTARIO
905-632-5044

TORONTO, ONTARIO
416-421-5851

DORVAL, QUEBEC
514-684-1760

MONCTON, N.B.
506-857-4291

www.delequipment.com • email: sales@delequipment.com



Ford Authorized Upfitter



AEROCCELL

PROFIT MEASURED
IN MILES

Distinctive styling and extraordinary fuel-efficient design make **Aerocell** the smart professional's choice.

UNICELL

THE ONE PIECE FIBERGLASS VAN BODY

STANDARD FEATURES

AEROCELL

The following standard Aerocell features are continually monitored and updated to ensure **excellence in quality and performance...**

1. Air Deflector

- ▶ Computer designed for increased fuel efficiency, better highway stability, and reduced wind noise
- ▶ Inside is a roomy storage shelf or an optional walk-through cab

2. Side Fairings

- ▶ Creates a smooth transition from cab to body
- ▶ Lowers drag for fuel efficiency and reduced wind noise

3. One-Piece Fiberglass Skin

- ▶ No seams. No rivets. No leaks. No rust!
- ▶ Smooth, glossy surface is the perfect billboard for company graphics
- ▶ Tougher than .040 aluminum and more puncture resistant than 1/2" plywood

4. Rub Rail

- ▶ Anodized aluminum with PVC fastener cover strip is scratch resistant
- ▶ Aerodynamically smooth, clean, and attractive
- ▶ Provides extra body protection

5. Lower Fairings

- ▶ Gradually sweeps out from the cab to full body width
- ▶ Lowers drag for fuel efficiency and reduced wind noise

6. Floor

- ▶ 1-3/8" spruce plank is as durable as it is attractive

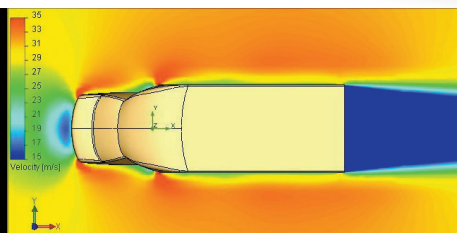
Find out how much money you can save with this model.



Since its introduction, Aerocell users consistently report **fuel savings of 15–20%** compared with conventional van bodies on cutaway chassis. See what you can save by using the fuel savings calculator at www.unicell.com.

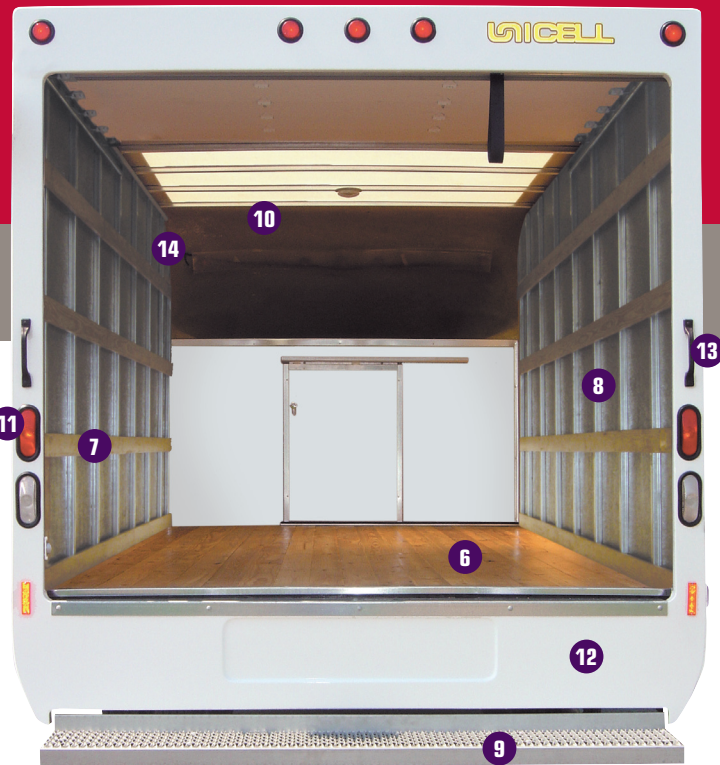
The **Aerocell's aerodynamic shape** not only makes you look good, but **saves you money** too. Here's how:

- ⊕ The reduction in wind drag means fuel savings that, in some cases, could pay for the entire cost of the body
- ⊕ Reduced noise and better handling mean less fatigue and higher productivity for you and your drivers
- ⊕ The tough fiberglass shell resists more impacts for less downtime and any required repairs are cheaper and faster than aluminum or FRP
- ⊕ One-piece molded shell means no leaks to cause costly cargo damage



Wind tunnel test model shows smooth air flow over body resulting in low drag. This translates to more miles per gallon of fuel.





UNICELL

THE ONE PIECE FIBERGLASS VAN BODY

7. Slat Lining

- ▶ 4 full-length rows of 4" wide dense poplar wooden slats on each side wall
- ▶ Versatile cargo control system for multiple tie-down locations and cargo protection

8. Steel Hoop Posts

- ▶ 18-gauge galvanized steel reinforcing hoops every 24"

9. Safety Step Bumper

- ▶ The safest bumper in the industry has an aggressive open grate slip-proof surface
- ▶ Galvanize dipped steel blocks rust and corrosion
- ▶ Extra deep 11-3/4" stepping surface across the full body width

10. Bright Interior

- ▶ Large, bright built-in skylight is a translucent part of the continuous roof skin
- ▶ 12v ceiling-mounted dome light for safe nighttime illumination

11. High Profile Taillights

- ▶ Easily visible from behind
- ▶ Less prone to damage by feet and cargo

12. Backframe

- ▶ Four-sided fiberglass rear frame enhances streamlined Aerocell design
- ▶ Recessed area easily notches out for walkramp installation

13. Grab Handles

- ▶ Two HD molded handles assist entry on both sides

14. Weatherproof Wiring

- ▶ Interior conduit protects wiring from damage and corrosion
- ▶ Lights are sealed and shockproof

15. Roll-up Rear Door

- ▶ Premium quality aluminum-clad door
- ▶ E-coated hardware corrosion protection



www.unicell.com